

# Final Software Tools and Services for Traders



## TPO and Volume Profile Chart for NinjaTrader

### Trial Period

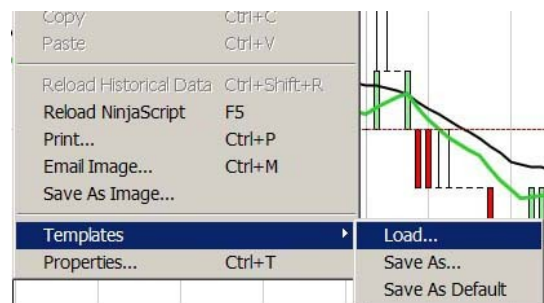
The software gives you a 7-day free evaluation period starting after loading and first running the indicator. At the end of 7 days you will be required to register the software.

### Download and Installation Instructions

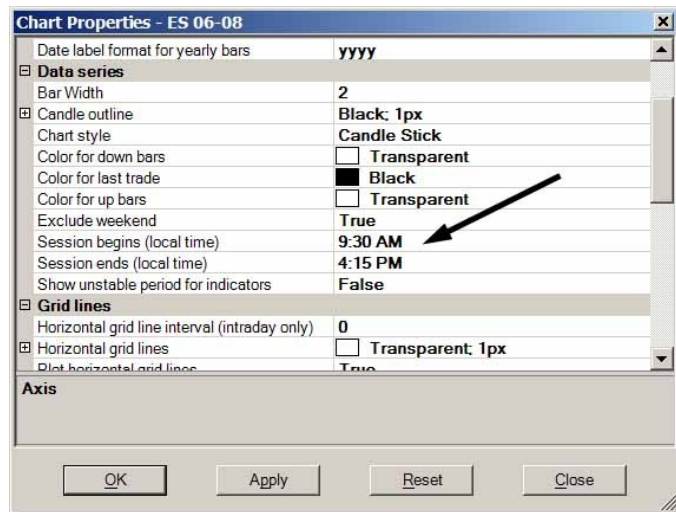
- Exit NinjaTrader if it is running
- Go to this link to download the package:  
[http://www.fin-alg.com/downloads/TPOChart/TPOChart\\_Setup.exe](http://www.fin-alg.com/downloads/TPOChart/TPOChart_Setup.exe)
- Run the file that has been downloaded
- Restart NinjaTrader

### Setting up the TPO Chart

- Open a 1 min chart
- Right click on the chart and select Templates > Load
- Select the 'TPOChart' template



- Adjust the chart session times according to your time zone: right click on the chart and select Properties
- Change the 'Session begins' and 'Session ends' times to the appropriate settings
- Save the template with the new settings so you won't have to redo the changes every time



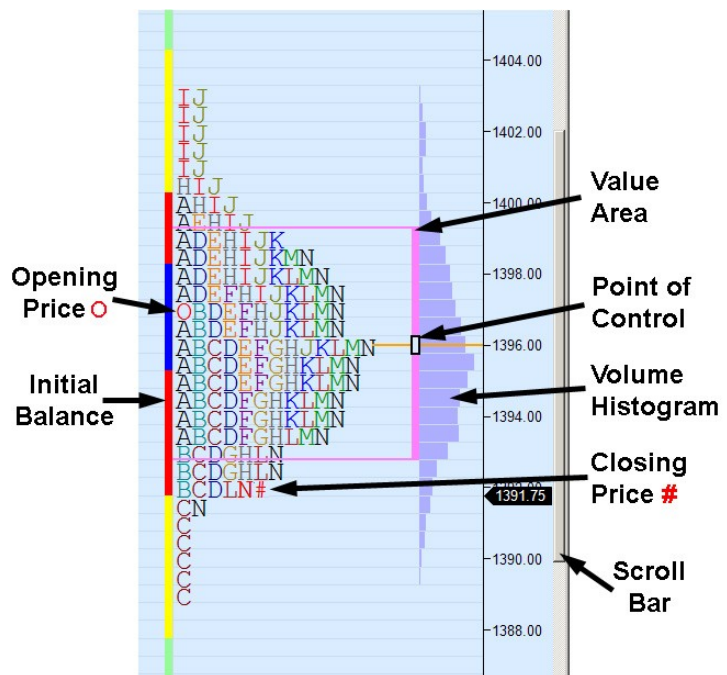
## The Chart

The Volume Profile chart displays market-generated information in such a way as to graphically show the relationship between time, price and volume. To accomplish this the chart uses a series of alphabetical letters to represent 30 minute time periods. Each letter is known as a "TPO", for Time Price Opportunity, and shows the range through which the price traded during that 30-minute period.

Typically the TPO chart starts a session with the letter 'A', representing for example 9.30 am to 10 am. The open is indicated with a red circle **O** and the series of letter 'A' s show the price levels traded during the 30-minute period.

Thereafter follows the letter 'B', in our example representing 10 am to 10.30 am, then 'C' for 10.30 to 11 am, and so on, through to 'N' for 4 pm to 4.30 pm. The red **#** identifies the closing price.

The dark blue sidebar to the left of the TPO's highlights the first two minutes of the session, known as the Opening Range. The red sidebar marks the range of the first hour of trading, known as the Initial Balance or IB. The yellow sidebar indicates 1½ times the range of the Initial Balance, and the pale green sidebar indicates twice the range of the Initial Balance.



The Point of Control, or POC, is the price at which the greatest amount of time has been spent trading. This is marked by a black rectangle to the right of the TPO's, and a horizontal orange line extending forward to the right. The Value Area shows the range where 70% of the trading has taken place, on either side of the POC, and is marked by the violet side bar to the right of the TPO's.

As the volume builds during the session, a histogram is created to the right of the TPO's, showing the volume distribution relative to the time distribution.

## Navigation

- To move the chart up or down and see TPO's above or below the immediately visible range, use the scroll bar located on the right side of the chart window. Click and drag up or down.
- To move the chart left or right use the scroll bar at the bottom of the chart.
- To make the TPO letters smaller, press the Up arrow while holding down the Control key, or to make the TPO letters larger use the Down arrow with the Control key. Alternatively you can click and drag up or down in the right margin of the chart over the price scale.

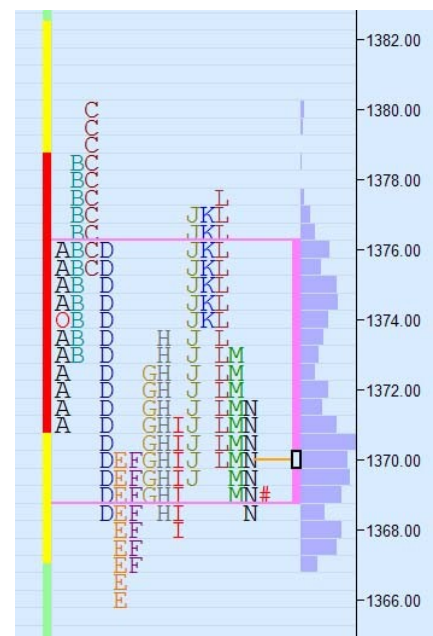
## Splitting and Merging



Right clicking over the chart brings up this menu

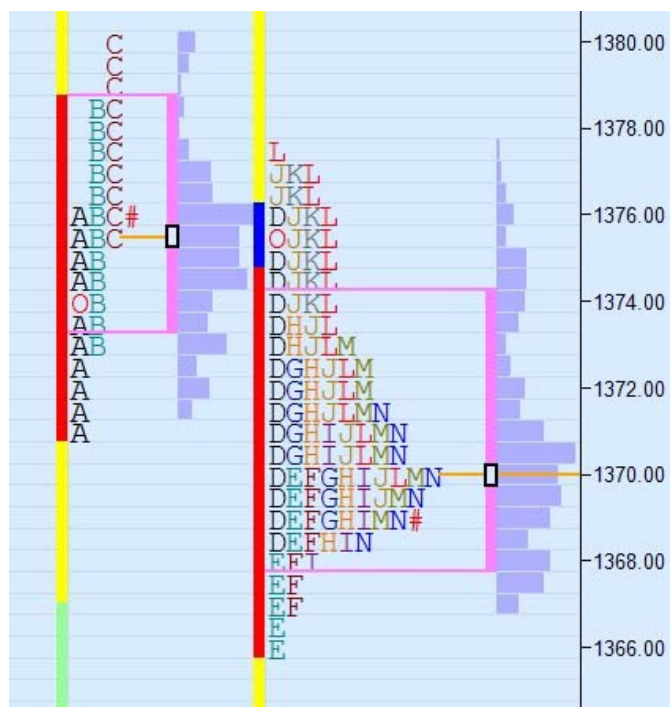
A useful feature is the ability to view a session with all the TPO's in separate columns. This allows the chronological sequence of TPO's and price to be perceived more readily.

Just select 'Split/Unsplit Letters' from the menu.



If you want to see different parts of a session separately, for example to highlight a price trend, you can split a session into independent parts.

Place the cursor over one of the TPO's where you want to make the split, right click and select 'Split Session at Letter' from the sub-menu. The session will be split into two separate groups of TPO's, each with its own independent Volume Histogram.



Conversely, it is possible to merge sessions together by right clicking on a selected session and clicking 'Merge Session Right'. That session will be combined with the adjacent session to its right, making a single group of TPO's with a single Volume Histogram. (A keyboard shortcut is to press the Control key along with the Shift key and 'M'.)

To remove all splitting and merging on the chart, select the fourth item on the right click menu: 'Remove Splitting and Merging'.

## Modifying the Indicator Configuration

To modify the configuration parameters for the TPO chart, right click on the chart, select Indicators from the list, and click TPOChart in the lower left quadrant of the window.

### Colors

Listed are the colors used to represent the Initial Balance and other features: these you can alter according to your personal preferences. 'Transparent' will hide a strip.

### Data Box

This section allows you to change the text format used in the Data Box, which shows Market Profile criteria, or to hide it.

### Display

Here you have an option to select the Volume Histogram drawing mode, Show, Hide or Overlay to draw below the TPO area.

<b>Colors</b>	
IB (Initial Balance)	<b>Red</b>
IB x 1.5	<b>Yellow</b>
IB x 2	<b>PaleGreen</b>
IB x 3	<b>255, 198, 170</b>
OR (Open Range)	<b>Blue</b>
POC	<b>Orange</b>
Text	<b>Black</b>
VA (Value Area)	<b>255, 128, 255</b>
Volume Bars	<b>174, 174, 255</b>
VPOC	<b>Orange</b>
<b>Data Box</b>	
Background Color	<b>ControlLight</b>
Font	<b>Tahoma, 8pt</b>
Show Data Box	<b>True</b>
Text Color	<b>Black</b>
<b>Display</b>	
Show Volume Histogram	<b>Overlay</b>

## **Miscellaneous**

You can change the length of the Initial Balance and the Opening Range, which are set by default to 2 TPO's and 2 minutes respectively.

## **Session**

You can define the length of each session (in minutes), to select one session per day keep the value 0, this parameter can be used to split the day into night and day sessions. For example configure the chart properties session begins and ends at 4:30 PM (Night session start) and set the night session length (Session Length) to 1020, this will make the day session start at 9:30 AM

## **TPO**

Each row on the chart normally represents 1 tick. You can choose to have each row represent 2 or more ticks when you need to view a wider ranging market.

'TPO Chars' lists the sequence of alphabetic characters that will be used for the TPO's on the chart. They can be altered to begin with any character of your choosing: replace the letters as required, e.g. inserting A B and C ahead of D.

'TPO size' defines the time period for each TPO, and is by default 30 minutes which is the normal usage in Market Profile. This may be changed to an alternative time period as required, for example 15 minutes.

## **Value Area**

The calculation of the Value Area and the POC is traditionally based on the distribution of TPO's. Alternatively you can set it to be calculated from the Volume distribution. It is normally calculated as 70% or roughly one standard deviation on either side of the center of the distribution (the POC), but you can modify this percentage as required. There is an option to plot the Value Area on the Left of the TPO's if preferred, and whether to plot horizontal lines on the chart to visually bracket the Value Area.

Auto scale	<b>True</b>
Calculate on bar close	<b>False</b>
Displacement	<b>0</b>
Display in Data Box	<b>False</b>
Label	<b>TPOChart</b>
Panel	<b>1</b>
Price marker(s)	<b>True</b>
Version	<b>TPOChart version 1.1.4</b>
<b>☐ Miscellaneous</b>	
Initial Balance Length (T	<b>2</b>
Open Range Length (mi	<b>2</b>
<b>☐ Session</b>	
Session Length (min)	<b>1020</b>
<b>☐ TPO</b>	
Prices per Row (Ticks)	<b>1</b>
TPO Chars	<b>DEFGHIJKLMNOPQRSTUVWXYZ</b>
TPO Size (In minuets)	<b>30</b>
<b>☐ Value Area</b>	
Calculation	<b>TPO</b>
Plotting position	<b>Right</b>
Show Lines	<b>True</b>
Value Area Size (%)	<b>70</b>

## **Ordering Information**

The price is a one-time payment of \$249

[www.fin-alg.com/tpoandvolumechart.html](http://www.fin-alg.com/tpoandvolumechart.html)

## Frequently Asked Questions

How do I make the chart smaller and see more of it on one page?

Pressing the Up arrow while holding down the Control key will compress the letters on the chart or use the Down arrow with the Control key to make the chart larger. To further compress the chart, try changing the number of Prices per Row to 2 or 4 ticks, in the Indicator Configuration panel.

How can I see further up or down the chart?

Use the scroll bar located on the right side of the panel. Click and drag the bar up or down.

How do I get the TPO's to start with a different letter?

Change the sequence of alphabetic characters found in the 'TPO Chars' section in the Indicator Configuration panel.

How do I get the chart to show the 24 hour session of the market?

Change the 'Session begins' and 'Session ends' times in the Chart Properties panel, for example from 4:30 PM to 4:30 PM, or from 9:30 AM to 9:30 AM